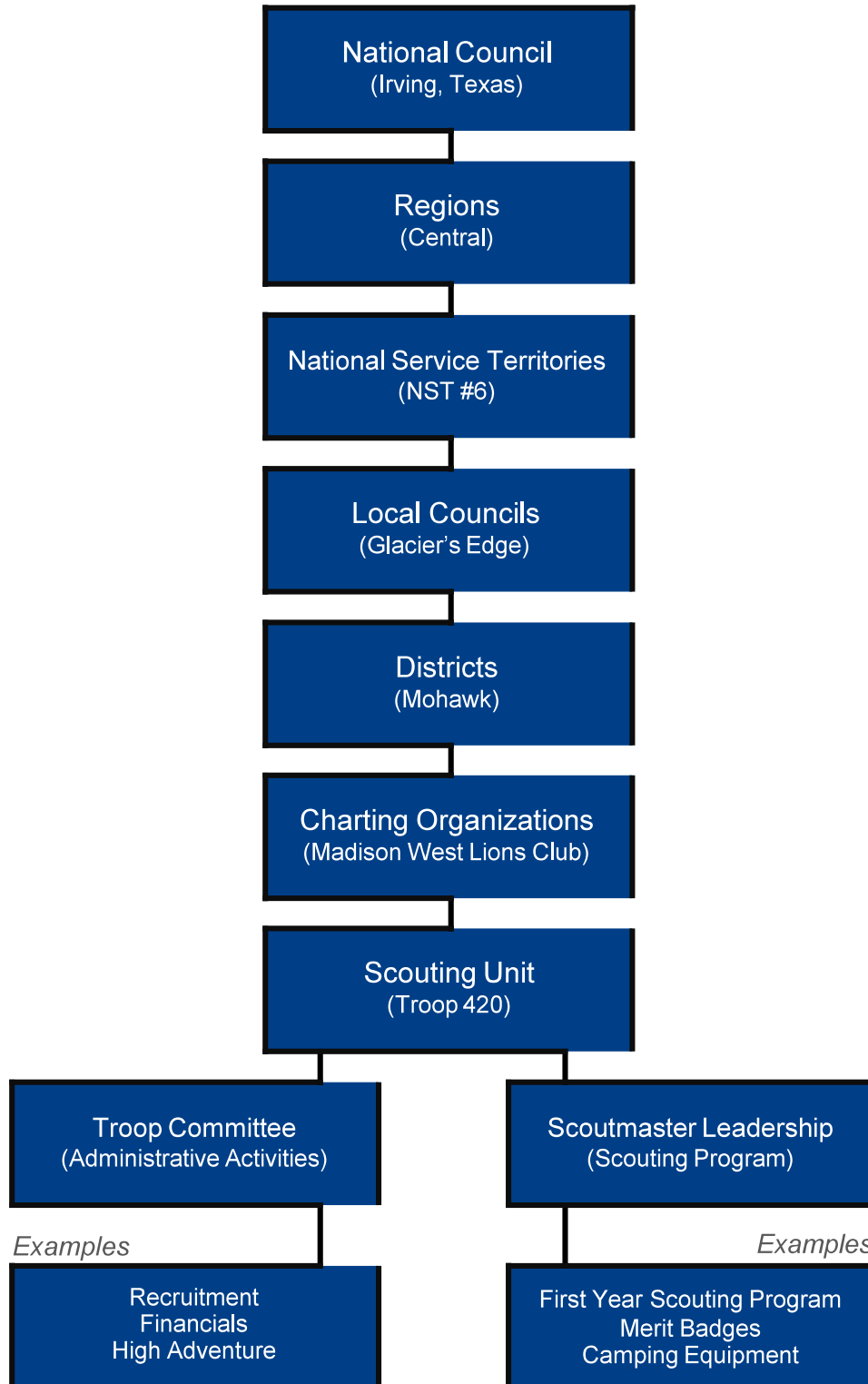




Scouting BSA Organizational Chart



National Council: Examples of Responsibilities

- Responsible for all major policy decisions regarding the Scouting program (chartering, training programs, merit badges and rank advancement)
- Repository for all Scouting data (membership, finances, advancement)
- Maintains national High-Adventure bases such as Philmont and Seabase

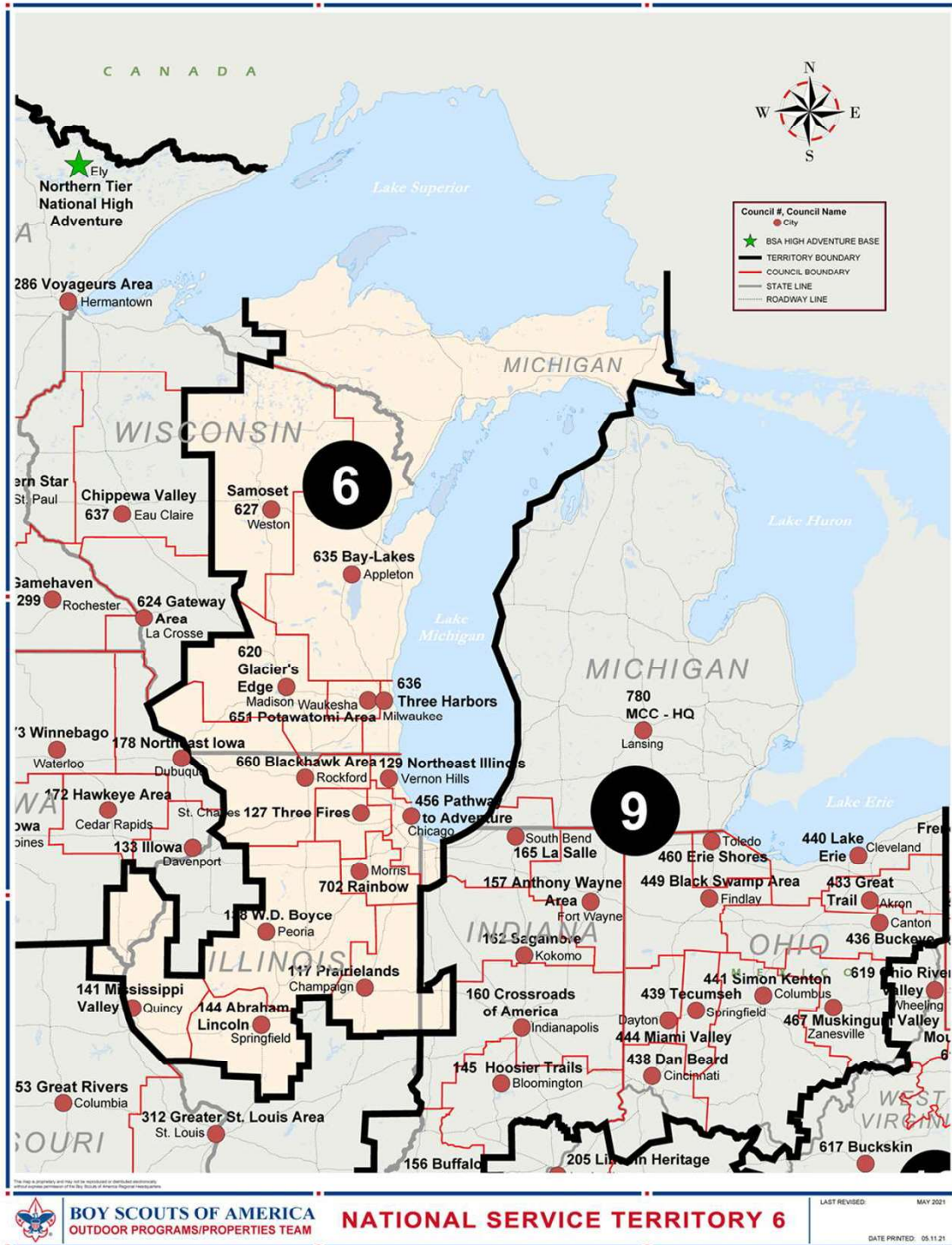
Scouting BSA Regions (Central)



Scouting BSA Regional Committees: Examples of Responsibilities

- Communicates national policies, programs, and information to local councils within each region
- Plans events and activities in the region
- Maintains established standards, supports local councils, and trains volunteers and professionals

National Service Territory #6



National Service Territory: Examples of Responsibilities

- Helps councils ensure Scout safety and youth protection
- Assists councils in strengthening membership
- Ensures councils achieve national performance standards

Wisconsin Boy Scout Councils

Voyageurs Area Council

Northern Star

Chippewa Valley

Samoset

Bay Lakes

Gateway Area

Glacier's Edge

Potawatomi Area

Blackhawk

Three Harbors



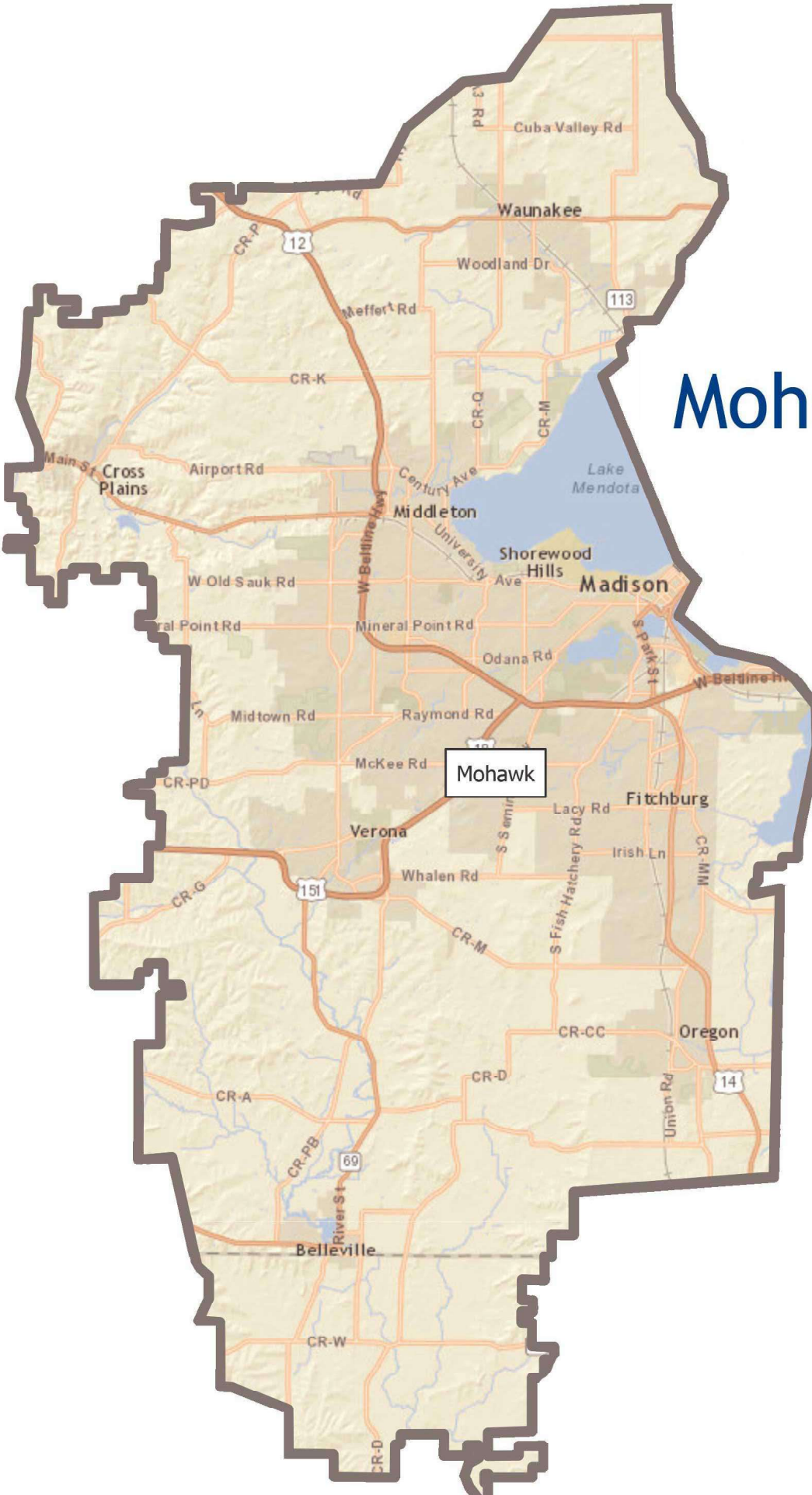
Local Council (Glaciers Edge): Examples of Responsibilities

- Registers units and council personnel; provides leadership training
- Provides facilities for summer camp and outdoor activities
- Ensures the integrity of the merit badge requirements, supervises advancement in Scouting, and ensures standards in Scout policies

Mohawk District



Madison West Side
Fitchburg
Oregon
Verona
Middleton
Waunakee
Cross Plains
Belleville



District (Mohawk): Examples of Responsibilities

- Ensures the growth and success of Scouting units
- Provides direct coaching and consultation to a unit
- Approves Merit Badge Counselors

Chartering Organization (Madison West Lions Club): Examples of Responsibilities

- Receives a national charter to use the Scouting program
- Selects the Scoutmaster, appoints the Committee Chair, and approves all adult leadership
- Responsible for running the Scouting unit

Troop 420: Structure of Adult Leadership and Examples of Responsibilities

Troop Committee

- Recruitment
- Financials
- High Adventure

Scout Leadership Group

- First-year scouting program
- Merit Badges
- Camping Equipment