

Troop 420 October Outing

Governor Dodge State Park

Dodgeville, Wisconsin

Itinerary: Saturday, October 1, 2011

7:45 to 8:00 AM	Check in at Garner Park parking lot, 333 Rosa Rd.
8:00 AM (Sharp)	Depart Garner Park
8:45 AM	Arrive Governor Dodge State Park
9:00 to 10:30 AM	Set tents and cooking areas in Group Site C
10:30 to Noon	Explore campsite and outdoor advancement skills
Noon to 1:00 PM	Lunch by patrol
1:00 to 5:30 PM	Hike around Stephans' Falls, visit Cox Hollow Lake
5:30 to 7:00 PM	Supper by patrol
7:30 PM	Troop campfire
10:00 PM	Taps and lights out

Itinerary: Sunday, October 2, 2011

7:30 AM	Reveille
7:30 to 9:30 AM	Breakfast by patrol
9:30 AM	Troop worship service
10:45 AM	Take down tents and clean up
11:15 AM	Depart for home
Noon	Arrive in Madison

Requirements:

- \$15 participant cost includes camping permit, three meals, crackerbarrel.
- Advance registration by e-mail preferred to: darrylfargo@charter.net
Or, register with Treasurer Mr. Werner at the September 19 & 26 troop meetings. Registration deadline is Monday, September 26.
- Class A uniform required for travel and troop worship service.
- Adult drivers needed for transportation to and from Governor Dodge; Wisconsin State Park sticker required on vehicle.
- Learn more about Governor Dodge State Park at:
www.dnr.state.wi.us/org/land/parks/specific/govdodge/
- Contact Scoutmaster Darryl Fargo with any questions (437-6905).

TRAIL MAP – GOVERNOR DODGE STATE PARK

Hiking Trails

Cox Hollow Beach Trailhead

- Meadow Valley Trail, 5.0 mi.
- Mill Creek Trail, 3.3 mi.
- Lake View Trail 1.25 mi.

Enee Point Picnic Area

- Pine Cliff Trail, 4.5 mi.

Meadow Valley Trailhead

- Meadow Valley Trail, 5.0 mi.
- Goldmine Trail, 0.5 mi.

Stephens Falls Parking Area

- Stephens Falls Trail, 0.5 mi.
- Lost Canyon Trail, 3.0 mi.
- Goldmine Trail, 0.5 mi.

Alternate Access Points

- Uplands Trail, 2.5 mi.
- Cave Trail, 1.0 mi.

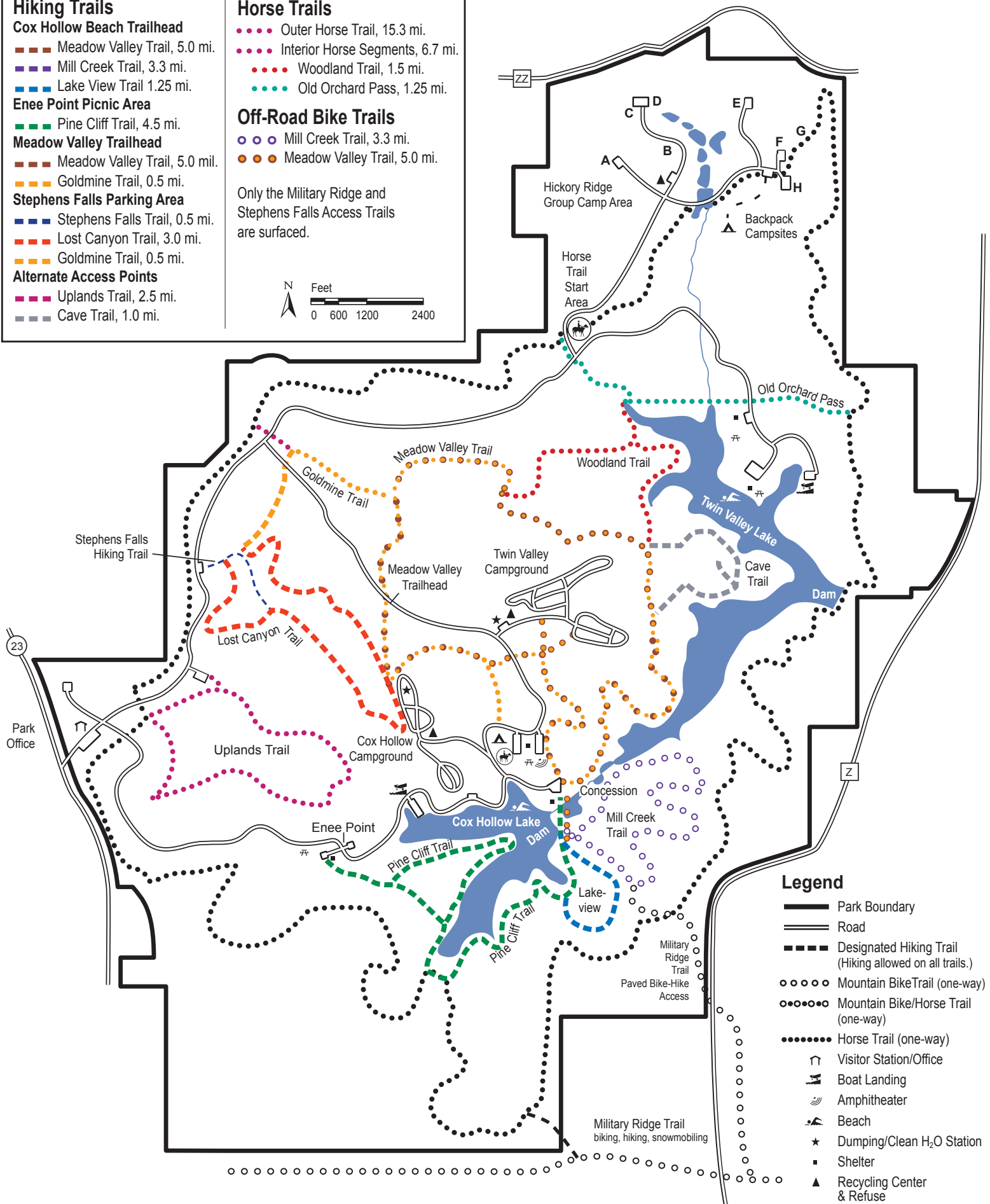
Horse Trails

- Outer Horse Trail, 15.3 mi.
- Interior Horse Segments, 6.7 mi.
- Woodland Trail, 1.5 mi.
- Old Orchard Pass, 1.25 mi.

Off-Road Bike Trails

- Mill Creek Trail, 3.3 mi.
- Meadow Valley Trail, 5.0 mi.

Only the Military Ridge and Stephens Falls Access Trails are surfaced.



Legend

- Park Boundary
- Road
- Designated Hiking Trail (Hiking allowed on all trails.)
- Mountain Bike Trail (one-way)
- Mountain Bike/Horse Trail (one-way)
- Horse Trail (one-way)
- ↑ Visitor Station/Office
- ⚓ Boat Landing
- 🎪 Amphitheater
- 🏖 Beach
- ★ Dumping/Clean H₂O Station
- Shelter
- ▲ Recycling Center & Refuse